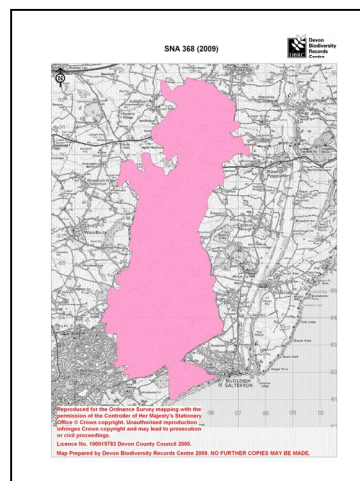


## SNA details

<b>SNA name:</b>	East Devon Pebblebed Heaths
<b>SNA unique number:</b>	368
<b>SNA area (ha):</b>	3352.22



## Summary of nature conservation interest

### Priority BAP habitats

<b>Main Regional Nature Map habitat:</b>	Lowland Heath
<b>Other Regional Nature Map habitat(s):</b>	
<b>Other UK BAP habitats:</b>	Lowland mixed deciduous woodland, wet woodland, lowland dry acid grassland, maritime cliff and slope, fens, hedges, rivers, ponds

This is a large SNA, stretching from the East Devon Pebblebed Heaths, to the coast. The SNA is mostly within the East Devon AONB, and contains the largest block of lowland heath in Devon. The East Devon Pebblebed Heaths have been designated a Special Area of Protection (SPA) and Site of Special Scientific Interest (SSSI) and are a nationally important representative of the inland Atlantic-climate, lowland heathlands of Britain and north-west Europe. The SSSI covers a variety of habitats, including dry heath, wet heath, valley mires and mineral-rich flushes, and supports over 70 breeding bird species and 21 breeding dragonfly species.

The SPA covers over 30% of the SNA, and also includes the SSSI, two Devon Wildlife Trust nature reserves and a Royal Society for the Protection of Birds (RSPB) nature reserve. Most of the SSSI is Common Land. Outside the protected areas, there are a couple of ancient semi-natural woodlands, secondary woodland and wet woodland, with some unimproved acidic, neutral and marshy grassland. Otherwise the land is mainly arable, with conifer and broadleaved plantations, golf courses and a working quarry. The southern end of the SNA overlaps with SNA 1182 (maritime cliff and slope) and ends in a steep cliff where the land meets the sea.

There has been a lot of wildlife recording, especially on the two DWT nature reserves, so there are a lot of records, especially of fungi, butterflies and moths, dragonflies, birds and plants.

Important species or species assemblage	Status
Long-Leaved Sundew, Black Bog-Rush, Green-Winged Orchid, Lesser Butterfly-Orchid, Hairy Bird's-Foot-Trefoil, Ivy Broomrape, Pale Heath Violet	Devon Notable Species UKBAP (Lesser Butterfly-Orchid) Nationally scarce (Hairy Bird's-Foot-Trefoil, Ivy Broomrape, Pale Heath Violet)
Primrose	DBAP
70 breeding species of birds including Hobby, Nightjar, Dartford Warbler Barn Owl, Hen Harrier, Reed Bunting, Woodlark are also present	UKBAP (P) (Reed Bunting, Cirl Bunting, Woodlark, Nightjar) DBAP (Barn Owl, Nightjar, Cirl Bunting) Red (Hen Harrier) Amber (Reed Bunting, Woodlark, Dartford Warbler)
Over 20 UKBAP moths & butterflies including Small Pearl-Bordered Fritillary, Silver-Studded Blue, Grizzled Skipper, High Brown	UKBAP (P) DBAP (Pearl-bordered Fritillary)

Fritillary, Pearl-bordered Fritillary, Wood White	
21 breeding species of dragonfly including Southern Damselfly, Downy Emerald, Hairy Dragonfly, Small Red Damselfly, White-Legged Damselfly, Keeled Skimmer	Internationally Important, UKBAP (P), DBAP (Southern Damselfly) Nationally Important & Nationally Notable B (Downy Emerald, Hairy Dragonfly, Small Red Damselfly, White-Legged Damselfly, Keeled Skimmer)
Nationally Notable invertebrates including Small Grass Emerald and Wood Cricket, Purple Emperor	Nationally Notable A Nationally Notable B (Purple Emperor)
Otter, Common Dormouse, Harvest Mouse, Greater Horseshoe Bat, Lesser Horseshoe Bat, Brown Long-Eared Bat	UKBAP (P) DBAP (Otter, Dormouse, Greater horseshoe bat)
Reptiles and amphibians e.g. Adder, Slow-Worm, Grass Snake, Viviparous Lizard Common Toad	UKBAP (P)

See Appendix 1 for further species recorded in SNA 368.

## Nature conservation designations

*Please refer to a site's formal citation for a complete consideration of the reasons for its designation.*

Designation	Site Name	Description
SPA	East Devon Pebblebed Heaths	Lowland heath
SSSI	East Devon Pebblebed Heaths	Lowland heath

In addition the SNA includes 12 County Wildlife Sites covering habitats including: Ancient semi-natural woodland, secondary broadleaved woodland, wet woodland, unimproved acidic, neutral and marshy grassland, heathland, coastal scrub and ponds.

There is also one Regionally Important Geological Site and two Devon Wildlife Trust nature reserves.

## UK BAP Priority habitat maintenance and restoration targets for SNA no 368

(the measurement unit is hectare unless stated otherwise and is rounded up/down)

**Maintenance targets** (current extent of habitat) . 100 % favourable condition  
(based on NBN habitat layers)

UK BAP priority habitat	Maritime Cliff and Slope	Lowland mixed deciduous woodland	Wet Woodland	Woodland TOTAL	Lowland Dry Acid Grassland	Lowland Heathland	Fens <sup>1</sup>	TOTAL
Minimum area *	0.25	2	5	7.25		36		43.25
Maximum area #	40	169	5	214	58	905	292	1469

\* current extent of habitat = a + b

a) sum of all the areas of criterion 1 polygons (*Definitely is*)  
b) number of criterion 2 polygons multiplied by the minimum mappable unit for that habitat (*Definitely present within polygon but not mappable*)  
[criterion 3 polygons not included] (*Probably the Priority Habitat but some uncertainty of interpretation*)

# current extent of habitat = criterion 1 + criterion 2 + criterion 3

<sup>1</sup>Fens: The NBN habitat layer has a large area in this SNA mapped as lowland fen however there is some doubt over the accuracy of this. Little reference could be found to fen habitat in survey data relating to this area and there is often confusion over the definition of fen and how it overlaps with mire, swamp and bog.

### **Theoretical restoration/creation targets using Rebuilding Biodiversity (RB) methodology:**

The Rebuilding Biodiversity in the South West Technical Manual, November 2005 suggests the following restoration/creation targets for a Strategic Nature Area profile where the priority habitat is lowland heathland:

60% cover of priority habitat  
0% cover of other semi-natural habitat  
40% cover of other land uses.

### **Opportunities for habitat restoration and creation in the SNA**

This is an optional but desirable section to be completed by local experts and which would outline the practical opportunities for habitat restoration and creation on the ground. This may include emphasising the importance of an SNA for habitats additional to the primary one for which it was identified or, indeed, for particular species.

This section can also be used to develop more realistic habitat restoration targets, which could then be used to refine the theoretical targets listed above.

### **Constraints to habitat restoration and creation in the SNA**

As above, but in this case outlining the constraints to habitat restoration and creation in the SNA.

### **Other information**

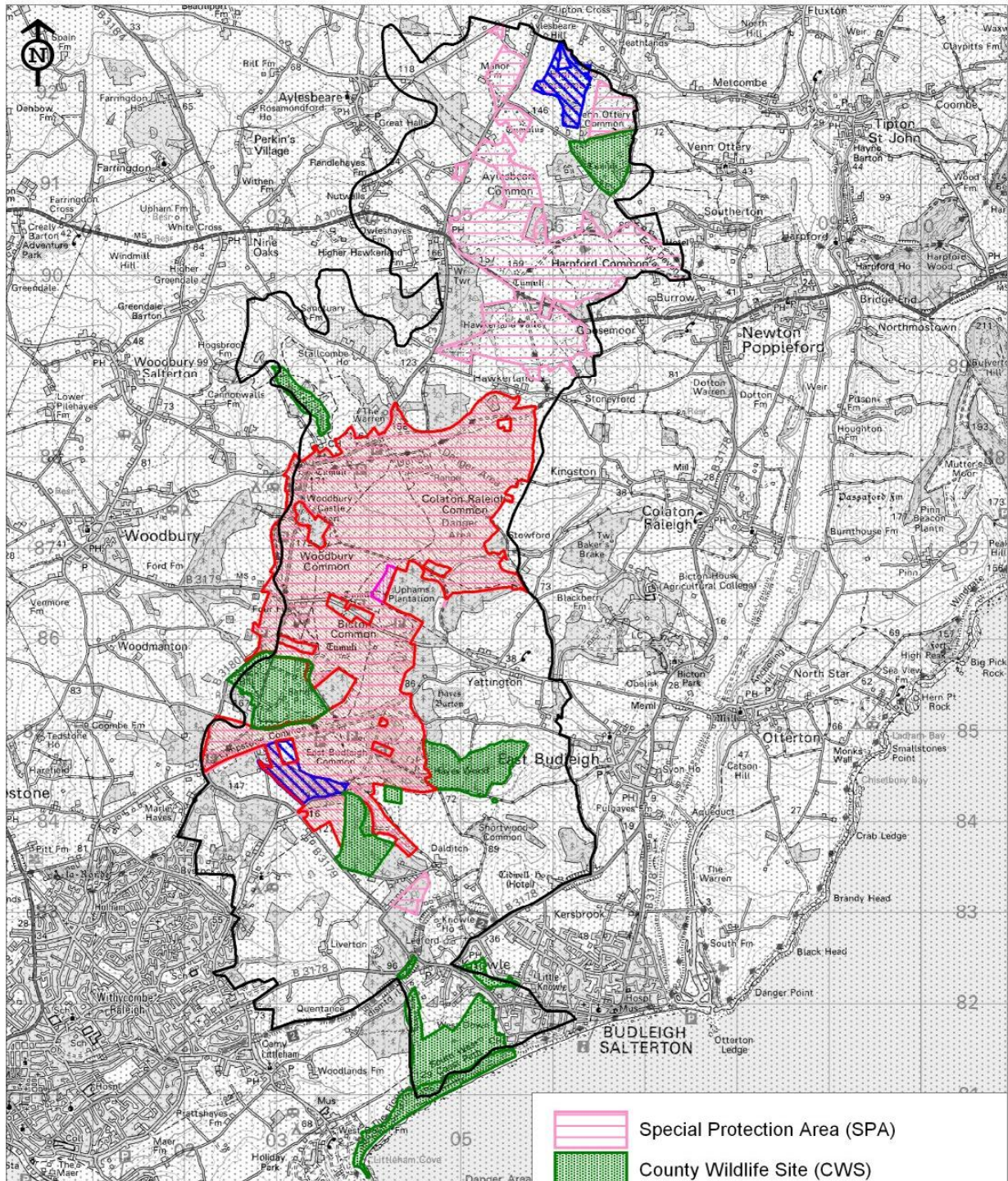
This is another optional section reliant upon local knowledge of the SNA. This section can be used for any other information that might be useful. It may be particularly useful for those SNAs within which there current projects or for which projects are planned.

Contents could include:

- Restoration targets for BAP habitats additional to the main nature map habitat.
- Maps detailing areas for restoration
- Nature conservation objectives
- And so on.



# Designated Sites within SNA 368 (2009)



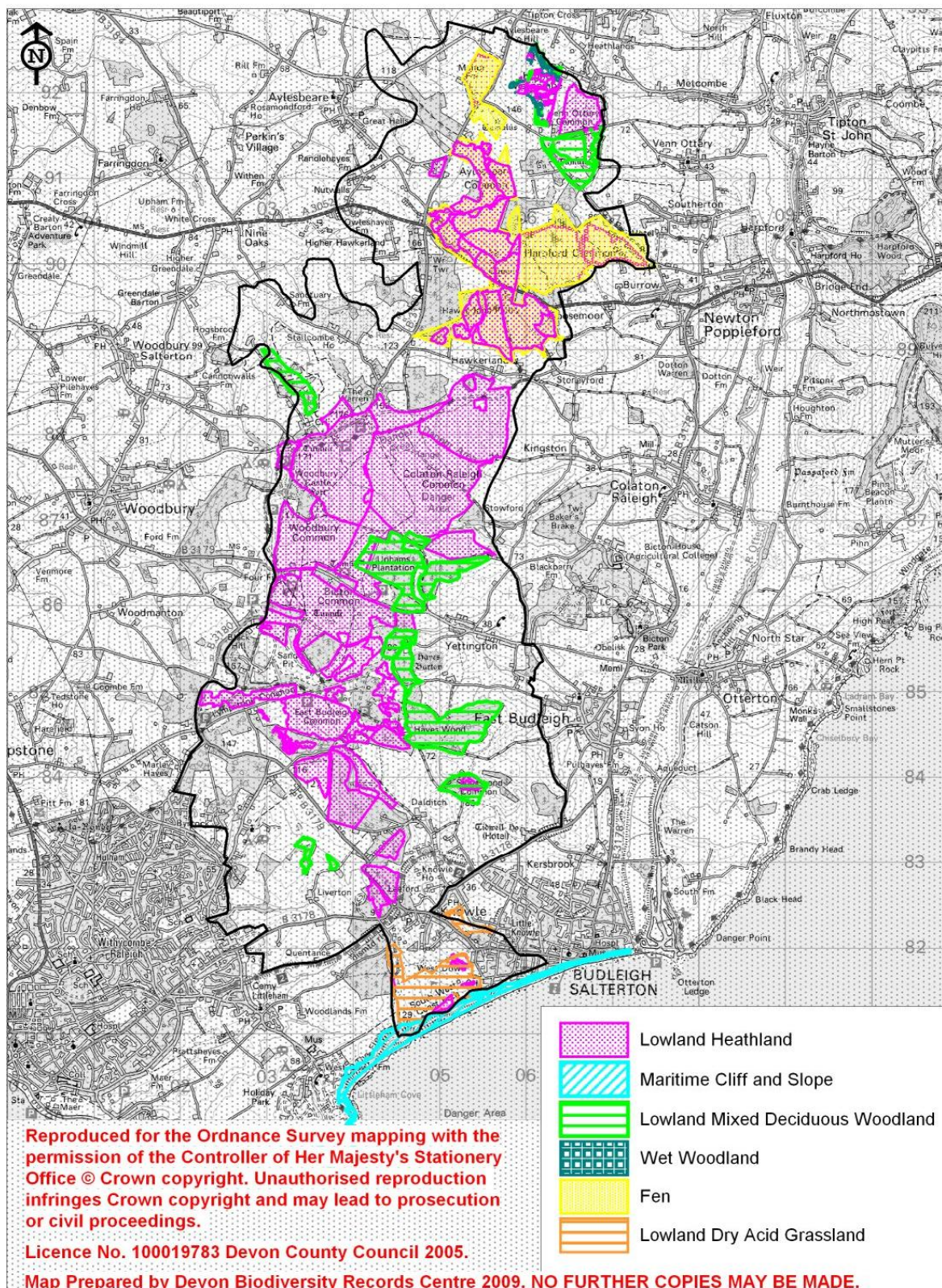
**Reproduced for the Ordnance Survey mapping with the permission of the Controller of Her Majesty's Stationery Office © Crown copyright. Unauthorised reproduction infringes Crown copyright and may lead to prosecution or civil proceedings.**

**Licence No. 100019783 Devon County Council 2005.**

**Map Prepared by Devon Biodiversity Records Centre 2009. NO FURTHER COPIES MAY BE MADE.**



# Selected UKBAP Priority Habitats within SNA 368 (2009)



Appendix 1: Legally protected and notable species found within SNA 368

Common name	Scientific name	Status
45 Khz Pipistrelle	Pipistrellus pipistrellus 45kHz	WCA
a Bat	Chiroptera	WCA
A Long-eared bat	Plecotus	WCA
Adder	Vipera berus	WCA; UKBAP (P)
American Blue-Eyed-Grass	Sisyrinchium montanum	DN1
Annual Knawel	Scleranthus annuus	UKBAP (P); DN1
Badger	Meles meles	WCA
Barn Owl	Tyto alba	WCA; DBAP; Amber
Beaded Chestnut	Agrochola lychnidis	UKBAP (P)
Black Bog-Rush	Schoenus nigricans	DN2
Black-Headed Gull	Larus ridibundus	Amber
Bluebell	Hyacinthoides non-scripta	WCA
Brambling	Fringilla montifringilla	WCA
Brown Argus	Aricia agestis	Decline
Brown Long-Eared Bat	Plecotus auritus	WCA; UKBAP (P)
Buff Ermine	Spilosoma luteum	UKBAP (P)
Bullfinch	Pyrrhula pyrrhula	UKBAP(P); Amber
Bulrush	Schoenoplectus lacustris	DN1
Chalk-hill Blue	Lysandra coridon	WCA; Decline
Cinnabar	Tyria jacobaeae	UKBAP (P)
Cirl Bunting	Emberiza cirlus	WCA; UKBAP (P); DBAP; Red
Cloaked Carpet	Euphyia biangulata	Nb
Common Chamomile	Chamaemelum nobile	UKBAP (P); NS; DN3
Common Dormouse	Muscardinus avellanarius	WCA; UKBAP (P); DBAP
Common Frog	Rana temporaria	WCA
Common Gull	Larus canus	Amber
Common Shrew	Sorex araneus	WCA
Common Toad	Bufo bufo	WCA; UKBAP (P)
Corky-Fruited Water-Dropwort	Oenanthe pimpinelloides	DN3
Cormorant	Phalacrocorax carbo	Amber
Corncrake	Crex crex	WCA; UKBAP (P); Red
Cowslip	Primula veris	DN3
Crescent Dart	Agrotis trux lunigera	Nb
Crossbill	Loxia curvirostra	WCA
Cuckoo	Cuculus canorus	UKBAP (P); Red
Curlew	Numenius arquata	UKBAP (P); DBAP; Amber
Dark Green Fritillary	Argynnis aglaja	Decline
Dartford Warbler	Sylvia undata	WCA; Amber
Dingy Skipper	Erynnis tages	UKBAP (P); Decline
Dotted-Border Wave	Idaea sylvestriaria	Nb
Downy Emerald	Cordulia aenea	Nb; KeyD (N)
Dunnock	Prunella modularis	Amber
Essex Skipper	Thymelicus lineola	Decline
Fallow Deer	Dama dama	DA
Few-Flowered Spike-Rush	Eleocharis quinqueflora	DN1; DR
Fieldfare	Turdus pilaris	WCA; Red
Fine-Leaved Sheep's-Fescue	Festuca filiformis	DN1
Firecrest	Regulus ignicapillus	WCA; Amber
Floating Spike-Rush	Eleogiton fluitans	DN2
Fringed Water-Lily	Nymphoides peltata	NS; DN1; DR
Fritillary	Fritillaria meleagris	NS
Garden Tiger	Arctia caja	UKBAP (P)
Goldcrest	Regulus regulus	Amber
Golden Oriole	Oriolus oriolus	WCA; Red
Golden Plover	Pluvialis apricaria	Amber



Goldilocks Buttercup	<i>Ranunculus auricomus</i>	DN2
Goshawk	<i>Accipiter gentilis</i>	WCA; Amber
Grass Snake	<i>Natrix natrix</i>	WCA; UKBAP (P)
Grass Vetchling	<i>Lathyrus nissolia</i>	DN1
Grass Wave	<i>Perconia strigillaria</i>	Nb
Grasshopper Warbler	<i>Locustella naevia</i>	UKBAP (P); Red
Grayling	<i>Hipparchia semele</i>	UKBAP (P)
Great Black-Backed Gull	<i>Larus marinus</i>	Amber
Great Pond-Sedge	<i>Carex riparia</i>	DN2
Greater Horseshoe Bat	<i>Rhinolophus ferrumequinum</i>	WCA; UKBAP (P); DBAP
Green Figwort	<i>Scrophularia umbrosa</i>	Nb
Green Hairstreak	<i>Callophrys rubi</i>	Decline
Green Sandpiper	<i>Tringa ochropus</i>	WCA; Amber
Green Woodpecker	<i>Picus viridis</i>	Amber
Greenshank	<i>Tringa nebularia</i>	WCA
Green-Winged Orchid	<i>Orchis morio</i>	DN1
Grey Partridge	<i>Perdix perdix</i>	UKBAP (P); Red
Grey Wagtail	<i>Motacilla cinerea</i>	Amber
Greylag Goose	<i>Anser anser</i>	Amber
Grizzled Skipper	<i>Pyrgus malvae</i>	UKBAP (P); Decline
Hairy Bird's-Foot-Trefoil	<i>Lotus subbiflorus</i>	NS; DN1
Hairy Dragonfly	<i>Brachytron pratense</i>	Nb; KeyD (N)
Hairy Rock-Cress	<i>Arabis hirsuta</i>	DN1
Harebell	<i>Campanula rotundifolia</i>	DN1
Harvest Mouse	<i>Micromys minutus</i>	UKBAP (P)
Hawfinch	<i>Coccothraustes coccothraustes</i>	UKBAP (P); Red
Hay-Scented Buckler-Fern	<i>Dryopteris aemula</i>	DN3
Heath Pearlwort	<i>Sagina subulata</i>	DN3
Hedgehog	<i>Erinaceus europaeus</i>	WCA; UKBAP (P)
Hen Harrier	<i>Circus cyaneus</i>	WCA; Red
Herring Gull	<i>Larus argentatus</i>	Red
High Brown Fritillary	<i>Argynnis adippe</i>	WCA; UKBAP (P)
Hobby	<i>Falco subbuteo</i>	WCA
Honey Buzzard	<i>Pernis apivorus</i>	WCA; Amber
Horse Chestnut	<i>Pachycnemia hippocastanaria</i>	Nb
House Martin	<i>Delichon urbica</i>	Amber
House Sparrow	<i>Passer domesticus</i>	UKBAP (P); Red
Indet. Deer	<i>Cervidae</i>	DA
Ivy Broomrape	<i>Orobanchae hederaceae</i>	NS; DN2
Jack Snipe	<i>Lymnocyrtus minimus</i>	Amber
Japanese Knotweed	<i>Fallopia japonica</i>	WCA
Keeled Skimmer	<i>Orthetrum coerulescens</i>	KeyD (N)
Kestrel	<i>Falco tinnunculus</i>	Amber
Kingfisher	<i>Alcedo atthis</i>	WCA; Amber
Knotgrass	<i>Acronicta rumicis</i>	UKBAP (P)
Lapwing	<i>Vanellus vanellus</i>	UKBAP (P); Red
Lesser Black-Backed Gull	<i>Larus fuscus</i>	Amber
Lesser Butterfly-Orchid	<i>Platanthera bifolia</i>	UKBAP (P); DN3
Lesser Horseshoe Bat	<i>Rhinolophus hipposideros</i>	WCA; UKBAP (P)
Lesser Spotted Woodpecker	<i>Dendrocopos minor</i>	Red
Linnet	<i>Carduelis cannabina</i>	UKBAP (P); Red
Little Gull	<i>Larus minutus</i>	WCA
Long-Leaved Sundew	<i>Drosera intermedia</i>	DN2
Mallard	<i>Anas platyrhynchos</i>	Amber
Marsh Tit	<i>Parus palustris</i>	Red
Meadow Pipit	<i>Anthus pratensis</i>	Amber
Merlin	<i>Falco columbarius</i>	WCA; Amber
Mistle Thrush	<i>Turdus viscivorus</i>	Amber

Montagu's Harrier	<i>Circus pygargus</i>	WCA; Amber
Mottled Rustic	<i>Caradrina morpheus</i>	UKBAP (P)
Mouse Moth	<i>Amphipyra tragopoginis</i>	UKBAP (P)
Mullein Wave	<i>Scopula marginepunctata</i>	UKBAP (P)
Mute Swan	<i>Cygnus olor</i>	Amber
Neglected Rustic	<i>Xestia castanea</i>	UKBAP (P)
Nightingale	<i>Luscinia megarhynchos</i>	Amber
Nightjar	<i>Caprimulgus europaeus</i>	UKBAP (P); DBAP; Red
Osprey	<i>Pandion haliaetus</i>	WCA; Amber
Otter	<i>Lutra lutra</i>	WCA; UKBAP (P); DBAP
Pale Heath Violet	<i>Viola lactea</i>	UKBAP (P); NS; DN2
Pale Sedge	<i>Carex pallescens</i>	DN2
Palmate Newt	<i>Triturus helveticus</i>	WCA
Pearl-bordered Fritillary	<i>Boloria euphrosyne</i>	WCA; UKBAP (P); DBAP; Nb
Peregrine	<i>Falco peregrinus</i>	WCA; Amber
Pied Flycatcher	<i>Ficedula hypoleuca</i>	Amber
Pipistrelle	<i>Pipistrellus pipistrellus</i>	WCA
Primrose	<i>Primula vulgaris</i>	DBAP
Purple Emperor	<i>Apatura iris</i>	WCA; Nb
Purple Hairstreak	<i>Quercusia quercus</i>	Decline
Pygmy Shrew	<i>Sorex minutus</i>	WCA
Quail	<i>Coturnix coturnix</i>	WCA; Amber
Redpoll	<i>Carduelis flammea</i>	Amber
Redstart	<i>Phoenicurus phoenicurus</i>	Amber
Redwing	<i>Turdus iliacus</i>	WCA; Red
Reed Bunting	<i>Emberiza schoeniclus</i>	UKBAP (P); Amber
Ring Ouzel	<i>Turdus torquatus</i>	UKBAP (P); Red
Roe Deer	<i>Capreolus capreolus</i>	DA
Round-leaved Crowfoot	<i>Ranunculus omiophyllus</i>	DN1
Ruddy Darter	<i>Sympetrum sanguineum</i>	Nb; KeyD (R)
Rustic	<i>Hoplodrina blanda</i>	UKBAP (P)
Sand Martin	<i>Riparia riparia</i>	Amber
Sea-Buckthorn	<i>Hippophae rhamnoides</i>	NS; DN1
Serotine	<i>Eptesicus serotinus</i>	WCA
Sharp Rush	<i>Juncus acutus</i>	NS; DN1
Short-Eared Owl	<i>Asio flammeus</i>	Amber
Shoulder-Striped Wainscot	<i>Mythimna comma</i>	UKBAP (P)
Shoveler	<i>Anas clypeata</i>	Amber
Silver-Studded Blue	<i>Plebejus argus</i>	WCA; UKBAP (P); Nb
Skylark	<i>Alauda arvensis</i>	UKBAP (P); Red
Slow-Worm	<i>Anguis fragilis</i>	WCA; UKBAP (P)
Small Cudweed	<i>Filago minima</i>	DN1
Small Grass Emerald	<i>Chlorissa viridata</i>	Na
Small Heath	<i>Coenonympha pamphilus</i>	UKBAP (P)
Small Pearl-Bordered Fritillary	<i>Boloria selene selene</i>	UKBAP (P); Decline
Small Red Damselfly	<i>Ceriagrion tenellum</i>	Nb; KeyD (N)
Small Square-Spot	<i>Diarsia rubi</i>	UKBAP (P)
Smooth Brome	<i>Bromus racemosus</i>	DN2
Snipe	<i>Gallinago gallinago</i>	Amber
Song Thrush	<i>Turdus philomelos</i>	UKBAP (P); Red
Southern Damselfly	<i>Coenagrion mercuriale</i>	WCA; UKBAP (P); DBAP; KeyD (I)
Spotted Flycatcher	<i>Muscicapa striata</i>	UKBAP (P); Red
Starling	<i>Sturnus vulgaris</i>	Red
Stock Dove	<i>Columba oenas</i>	Amber
Stonechat	<i>Saxicola torquata</i>	Amber
Swallow	<i>Hirundo rustica</i>	Amber
Swift	<i>Apus apus</i>	Amber
Teal	<i>Anas crecca</i>	Amber



Three-lobed water-crowfoot	Ranunculus tripartitus	UKBAP (P); DN1
Tree Pipit	Anthus trivialis	UKBAP (P); Red
Tree Sparrow	Passer montanus	UKBAP (P); Red
Tubular Water-Dropwort	Oenanthe fistulosa	UKBAP (P); DN1; DR
Turtle Dove	Streptopelia turtur	UKBAP (P); Red
Usnea florida	Usnea florida	UKBAP (P)
Variable Blue Damselfly	Coenagrion pulchellum	Nb
Viviparous Lizard	Lacerta vivipara	WCA; UKBAP (P)
Wall Brown	Lasiommata megera	UKBAP (P)
Water Rail	Rallus aquaticus	Amber
Water Shrew	Neomys fodiens	WCA
Wheatear	Oenanthe oenanthe	Amber
Whimbrel	Numenius phaeopus	WCA; Red
Whinchat	Saxicola rubetra	Amber
White Admiral	Ladoga camilla	Decline
White Beak-Sedge	Rhynchospora alba	DN2
White Ermine	Spilosoma lubricipeda	UKBAP (P)
White Sedge	Carex curta	DN1; DR
White Water-Lily	Nymphaea alba	DN1
White-Legged Damselfly	Platynemis pennipes	Nb; KeyD (N)
Whitethroat	Sylvia communis	Amber
Willow Tit	Parus montanus	Red
Willow Warbler	Phylloscopus trochilus	Amber
Wood Cricket	Nemobius sylvestris	Na
Wood Warbler	Phylloscopus sibilatrix	UKBAP (P); Red
Wood White	Leptidea sinapis	WCA; UKBAP (P); Nb
Woodcock	Scolopax rusticola	Amber
Woodlark	Lullula arborea	WCA; UKBAP (P); Amber
Wryneck	Jynx torquilla	WCA; UKBAP (P); Red
Yellow Water-Lily	Nuphar lutea	DN1
Yellowhammer	Emberiza citrinella	UKBAP (P); Red

**WCA**                      **Wildlife and Countryside Act (1981)**

**DA**                        **Deer Act 1991:** deer protected under the Deer Act.

**UKBAP(P)**            **UK Priority Species (Short and Middle Lists - UK Biodiversity steering Group Report 1995)** i.e. species that are globally threatened and rapidly declining in the UK (by more than 50% in the last 25 years). Has a Species Action Plan.

**DBAP**                   **Devon Biodiversity Action Plan species:** these have been identified as species of key conservation concern in Devon.

**NS**                        **Nationally Scarce:** 15-100 10km squares in Atlas of British Flora 1962.

**Devon Notable Species:** Selected species recorded from over 50 2km squares in the Atlas of Devon Flora 1984 (R.B. Ivimey-Cook, Department of Biological Sciences, The University of Exeter).

**DN1**                      **Devon Notable<sup>1</sup>:** 1-25 2 km squares in Atlas of Devon Flora 1984.

**DN2**                      **Devon Notable<sup>2</sup>:** 26-50 2 km squares in Atlas of Devon Flora 1984.

**DN3**                      **Devon Notable<sup>3</sup>:** Selected species recorded from over 50 2 km squares in Atlas of Devon Flora 1984.

**DR**                        **Devon Rarity:** native species recorded from 3 or fewer localities within Devon.

<b>Na</b>	<b>Nationally Notable A:</b> known from 30 or fewer 10km squares. Taken from the Invertebrate Site Register.
<b>Nb</b>	<b>Nationally Notable B:</b> known from 100 or fewer 10km squares. Taken from the Invertebrate Site Register.
<b>Decline</b>	Substantial local decline in Devon
<b>Red List</b>	Bird species of high conservation concern, such as those whose population or range is rapidly declining, recently or historically, and those of global conservation concern.
<b>Amber List</b>	Bird species of medium conservation concern, such as those whose population is in moderate decline, rare breeders, internationally important and localised species and those of unfavourable conservation status in Europe.
<b>KeyD (I)</b>	<b>Internationally Important Key Dragonfly Species:</b> those which are rare in Great Britain (RDB3 and found in less than 1% of the 10km squares in Britain) i.e. Southern damselfly ( <i>Coenagrion mercuriale</i> ).
<b>KeyD (N)</b>	<b>Nationally Important Key Dragonfly Species:</b> those which have been recorded in less than 10% of 10km squares in Britain. Those occurring in Devon are White-legged damselfly ( <i>Playcnemis pennipes</i> ) Scarce blue-tailed damselfly ( <i>Ischnura pumilio</i> ) Small red damselfly ( <i>Ceriagrion tenellum</i> ) Hairy dragonfly ( <i>Brachytron pratense</i> ) Downy emerald ( <i>Cordulia aenea</i> ) and Keeled skimmer ( <i>Orthetrum coerulescens</i> ).
<b>KeyD (R)</b>	<b>Regionally Important Key Dragonfly Species:</b> those which have been recorded in 10-20% of the 10km squares in Britain: Red-eyed damselfly ( <i>Erythromma najas</i> ) and Ruddy darter ( <i>Sympetrum sanguineum</i> ).